

SOP FOR HIGH LEVEL SCENARIOS OF COVID-19

BACKGROUND

SP is committed to minimizing risks associated with Covid-19. This SOP contains steps to respond in case suspected or confirmed coronavirus cases are found at SP.

In scenarios where a church attendee or staff member of SP is a confirmed case, SP will work closely with the Centre of Health Protection (CHP) on the necessary measures to ensure the safety and well being of the church attendees and staff.

DEFINITION OF CLOSE CONTACT

A “**Close Contact**” is someone who was within 6 feet of an infected person for at least 15 minutes. In Hong Kong, the CHP considers anyone who has been in close contact with an infected person without a surgical mask in the past 2 weeks as “close contacts”. Note, however, that the CDC has recently changed its guidelines and no longer recommends differential determination of close contact for those using face masks (other than N95s), so the CHP position on facemasks may change.

SCENARIOS AT CHURCH

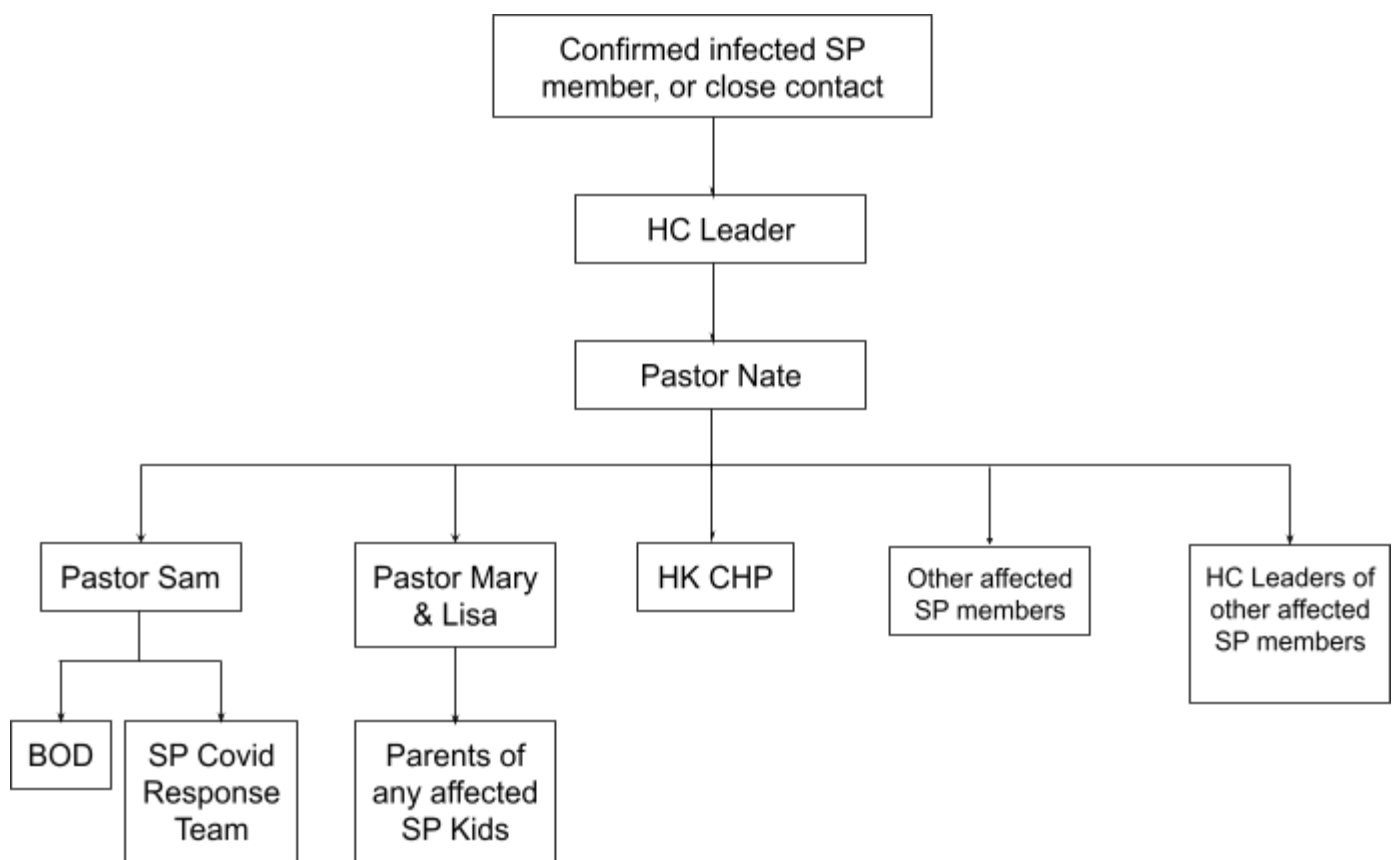
<p>1. Health Authorities report a confirmed case in Two Chinachem Plaza.</p> <p>Coordinate with the landlord on cleaning of common areas (as required).</p> <p>No specific actions are required unless informed by CHP.</p>	<p>2. An attendee who attended service is subsequently reported confirmed</p> <p>Notify CHP and cooperate with them to trace “close contacts” of the attendee.</p> <p>Coordinate with the landlord.</p> <p>Identify and notify (i) all persons at service who were sitting within 6 feet of the infected person, or with whom the infected person had direct physical contact; and (ii) any SP members with whom the attendee has been in close contact with during the past 21 days. Notify the affected SP members’ HC leaders to provide necc support.</p> <p>Disinfection of the floor where the attendee was present.</p> <p>Send a notice to the church that a confirmed case was present and that disinfection has taken place.</p>	<p>3. A staff member is reported confirmed.</p> <p>Notify CHP and cooperate with them to trace “close contacts” of the staff.</p> <p>Coordinate with the landlord.</p> <p>Identify and notify all SP members with whom this staff member has had “close contact” within the 21 days prior to confirmation of infection, or from the time of symptom onset (if earlier). Notify the HC leaders of these persons to provide necc support.</p> <p>All remaining staff to work from home for 21 days and monitor symptoms.</p> <p>Disinfection of the floor where the staff member was present.</p> <p>Send a notice to the church that a confirmed case was present and that disinfection has taken place.</p> <p>Sunday service will move to livestream until further notice.</p>
--	---	--

SCENARIOS OUTSIDE CHURCH

If an SP member or the persons with whom they live have come into “close contact” with a confirmed infected person, the following measures should be taken:

- a. Notify your HC leaders as soon as possible, and your HC leaders will then notify Pastor Nate. If you do not belong to a HC, notify a member of SP staff. As far as possible, please try to supply them with a list of any other SP members with whom you have had “close contact” in the period starting from 21 days prior to illness onset, or (if asymptomatic), 21 days prior to the COVID-infection being confirmed.
- b. Self-quarantine at home for the next 21 days, or, if earlier, until you are confirmed negative after taking a COVID Deep Throat Saliva Test. Details of where to take the COVID test can be found at the following link: <https://admedilink.hk/coronavirus-test-hong-kong-where-to-go/>

COMMUNICATION PROTOCOL



Centre for Health Protection Hotline: 2125 1111 / 2125 1122 (9 am to 10 pm)

HKSAR Government COVID-19 WhatsApp Helpline: 9617 1823